

37679



OMNIMAX

AUTOMATIC BIN LIFT SYSTEM

 **TERBERG**  
**MACHINES**  
A TERBERG ROSROCA COMPANY

*Translation of the original instruction.*  
*Issue date 05-2017*

The original Dutch version (article code 37658) can be obtained from Terberg.  
Please send a mail to: [info@terbergmachines.nl](mailto:info@terbergmachines.nl)

Baronieweg 23, 3403 NL, IJsselstein  
The Netherlands  
Telephone: (+31) 30 2100 600  
Telefax: (+31) 30 2100 610  
Homepage: [www.terbergmachines.nl](http://www.terbergmachines.nl)  
E-mail: [info@terbergmachines.nl](mailto:info@terbergmachines.nl)

	Page		Page
<b>FOREWORD</b>		<b>4. DIAGNOSTIC SYSTEM</b>	
• General	3	• Introduction: the 4 levels	26
• Warranty	3	• Working with the configuration program	26
• Requirements laid down for the operative	3	• Level 1	26
• Symbols used	3	• Level 2	27
• Description of sections	3	• Level 3 and 4	28
• Type indication	3	• Level 4 (continued)	29
<b>1. INTRODUCTION</b>		<b>5. MAINTENANCE AND CLEANING</b>	
1.1 Description of the bin lift system	4	5.1 General and daily maintenance	30
1.2 Technical specifications	5	5.2 Weekly maintenance	30
Bin and bin lift information	5	5.3 6-Weekly maintenance	31
<b>2. SAFETY</b>		5.4 Annual maintenance	31
2.1 General safety instructions	6	5.5 Adjustment of the ultrasonic sensors	32
2.2 Safety instructions		5.6 Maintenance schedule	33
During use of the bin lift system	7	<b>6. DECOMMISSIONING (disposing)</b>	32
During maintenance and repair	7	<b>7. DIMENSIONS</b>	
2.3 Warning signs	8	Bin lift system	34
2.4 Safety equipment: Emergency stop button		<b>8. ELECTRICAL COMPONENTS</b>	
General	9	Cable harness A	36/37
Operation of emergency stop button	9	Cable harness B	38/39
2.5 Safety equipment: RPD		Cable harness C	40
Operation of underwalk protection (RPD)	10	Cable harness V (37637)	41
<b>3. BIN LIFT OPERATION</b>		Cable harness V (37643)	42
3.1 Important components	12	List of inputs and outputs	43
3.2 Warnings and tips	13	List of alarm texts	44
3.3 Daily checks	13	<b>9. HYDRAULIC CONNECTIONS AND COMPONENTS</b>	45
3.4 Loading bags and/or bulky waste	14	Hydraulic block, overview components	46
3.5 Manual emptying of 40 litre bins	14	Hydraulic connections bin lift system	47
3.6 Manual emptying of 2-wheel bins	15	<b>10. PNEUMATIC CONNECTION</b>	
3.7 Automatic emptying of 2-wheel bins	16	Bin stop / catcher bar	48
3.8 Manual emptying of 4-wheel <u>flat-topped</u> bins, capacity 500 to 1280 litres	18	<b>11. TROUBLESHOOTING</b>	49
3.9 Manual emptying of 4-wheel <u>roll-topped</u> bins, capacity 770 and 1100 litres	19	<b>PARTS BOOK</b>	101
3.10 Loading 4-wheel Bammens bins with Bammens pick-up arms (option)	20		
3.11 Loading 4-wheel <u>roll-topped</u> bins with DIN pick-up arms (option)	21		
3.12 Loading 4-wheel <u>flat-topped</u> bins with DIN pick-up arms (option)	22		
3.13 One-man operation / automatic handling of 4-wheel bins (option)	23		
3.14 Emptying 4-wheel bins with the semi-automatic function (option)	24		
3.15 Travel height and footboards	25		

## Foreword

This user manual gives a quantity of information on the operation and maintenance of the **OmniMAX** bin lift system.

In order to work safely and efficiently with this automatic bin lift you need to read this manual through carefully before you start using the bin lift.

Make the user manual available to all persons involved in the operation and/or the maintenance of the bin lift.

When necessary also consult the user manual of the refuse collection vehicle and the refuse body. When all the operating and maintenance instructions have been met the bin lift can be safely used.

Should you nonetheless have any further questions, contact your distributor.

## Warranty

If you would like more information about the warranty terms and conditions, contact your distributor.

## Requirements laid down for the operative

- The bin lift may only be operated by persons who are familiar with the operation of the bin lift.
- Repairs may only be carried out by qualified personnel.

## Symbols used



### Note:

Additional information.



### Warning:

If these instructions are not followed, there is a risk of damage to the equipment and/or personal injury.



### Stop:

If these instructions are not followed correctly, there is a risk of personal injury and/or risk of serious damage to the equipment.

## The user manual contains the following sections:

### Introduction

A description of the intended use, conditions of use and operating principle of the machine.

### Safety

Description of the safety equipment and the measures that must be taken into account to work safely with the machine, together with an explanation of the symbols present on the machine.

### Operation

A clear description of the main components and instructions for emptying different types of bins.

### Maintenance and cleaning

Includes all the regular operations necessary for the proper functioning of the machine.

### Technical info

Electrical connections and controls, hydraulic connections and components, troubleshooting and parts.

## Type indication

Each bin lift is provided with a type plate with the type indication, machine number and year of construction. The type plate can be found on the right-hand side of the frame.

		Baronieweg 23 3403 NL IJsselstein Nederland Tel. +31 (0)30 210 06 00 www.terbergmachines.nl	Bin lift system Beladingsysteem Léve-conteneurs Schüttungssystem
TYPE		TCA-BL	
FABR. NR.	161031001007		BOUWJAAR YEAR OF MANUF. ANNÉE DE CONSTR. BAUJAHR
MANUF. NR.			
HERSTELL. NR.			

## 1.1 Description of the bin lift system

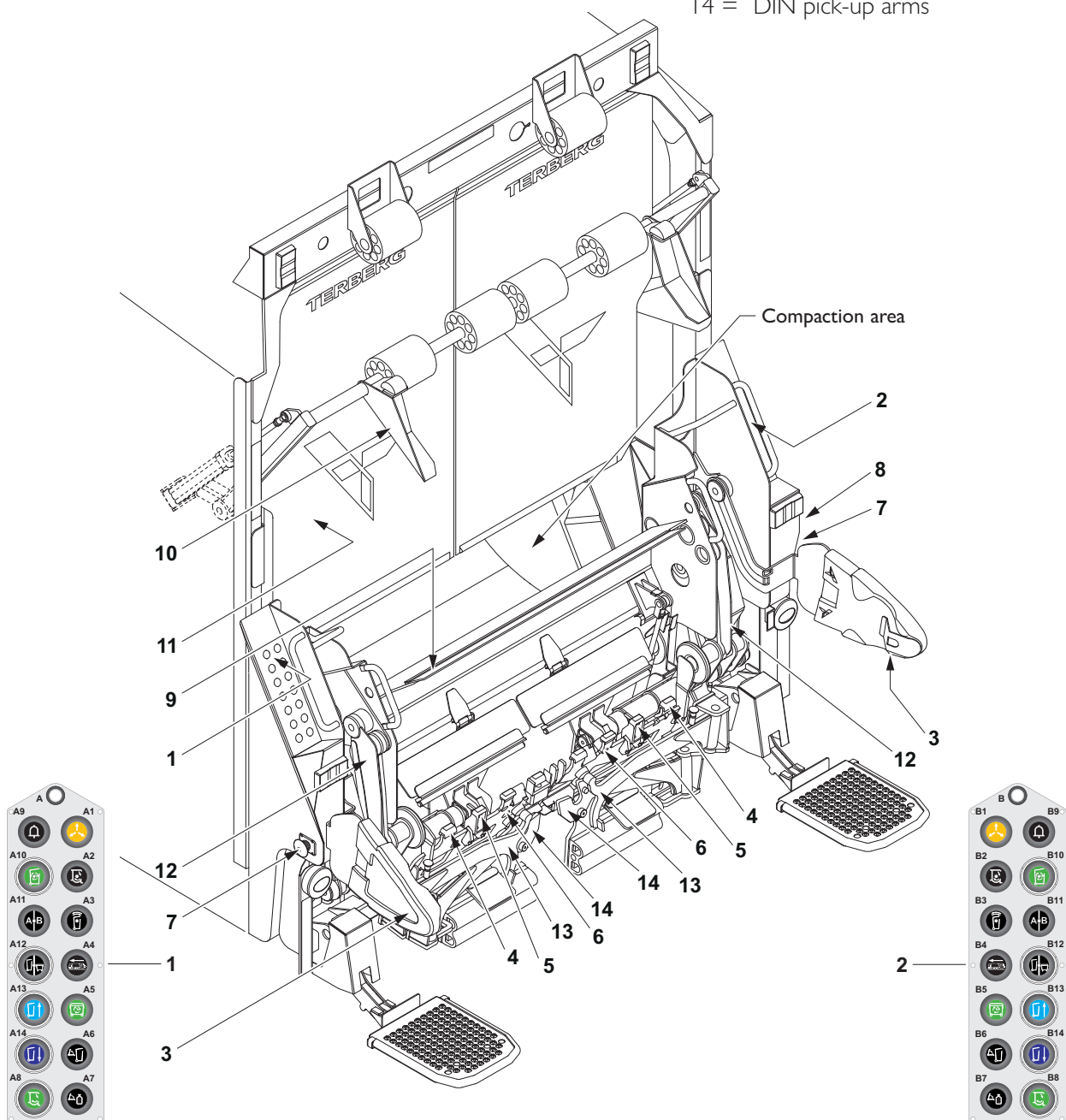
The **OmiMAX** is an automatic bin lift system that can be used very widely. It is not only suitable for emptying commonly used 2-wheel bins but also for most 4-wheel bins.

With the (optional) pick-up arms, refuse bins that are not suitable for comb pick-up can still be emptied.

Thanks to the low opening height the bin lift is also very suitable for collecting "loose" dirt.

- 1 = Control panel A (left)
- 2 = Control panel B (right)
- 3 = Safety arm with sensor
- 4 = Pick-up comb
- 5 = Bin security switch
- 6 = Start sensor
- 7 = Emergency stop button
- 8 = Diagnostic box
- 9 = Hopper plate
- 10 = Bin stop / catcher bar (2 positions)
- 11 = Dust curtain
- 12 = Warning edge


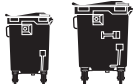


- Optional:**
- 13 = Bammens/Geesink or Bammens/Kronenburg pick-up arms
  - 14 = DIN pick-up arms



## 1.2 Technical specifications

Directives and Standards	2006/42/EG, EN 1501-1 & EN 1501-5: 2011
Weight	678 kg
Sound pressure	≤ 65 dB(A)
Vibration	≤ 2,5 m/s <sup>2</sup>
Operating voltage	24 Volts
Current	10 Ampère
Oil flow	40-60 litre/minute
Operating pressure PTO	Min. 180 bar / Max. 250 bar

### Bin and bin lift information

	2-wheel bins 	4-wheel flat-topped bins 	4-wheel roll-topped bins 	4-wheel Bammens pick-up bins 
Capacity (litres)	80* - 360	500 - 770 1000 - 1280	770 - 1100	500 tot 1700
According to standard	EN 840-1	EN 840-2	EN 840-3	EN 840-4
Lifting capacity	1500 N (150 kg)	7500 N (750 kg)		
Cycle time	±7 seconds	±12 seconds		
Emptying time	Adjustable			
Automatic emptying	yes	no	no	no
Manual emptying	yes	yes	yes	yes
Pick-up via comb	yes	yes	yes	no
Bammens pick-up arms	not applicable	not applicable	not applicable	(option)
DIN pick-up arms	not applicable	(option)	(option)	not applicable
Catcher bar	not applicable	not applicable	yes	not applicable
Bin stop	Forward position	Forward position (500-770) Rearward position (1000-1280)	Forward position	Rearward position

\* Only 80 litre bins with a minimum rim height of 86 cm (according to EN 840-1) can be emptied with this bin lift.

### 40 litre bins (option)

As an option 40 litre bins, with a body height of **44 cm**, can be emptied with this bin lift.

However, since there are also 40 litre versions on the market with a body height of **46 cm**, these may come within the range of the start sensor and activate the automatic function and that is undesirable.

The automatic emptying of this 46 cm high 40 litre version, and other bins without wheels, is however absolutely not permitted.



The emptying of bin types other than those indicated above, is not permitted with this bin lift system.

## 2.1 General safety instructions

### Terms of conformity

This bin lift conforms to the current standards at the time of production. It has been tested and checked, on a rig, in normal conditions with an increase of 25% weight in static and 10% weight in dynamic operation.

It is the end user's responsibility to maintain the equipment in accordance with the manufacturer's recommendations, also if there is a risk of damages or injury the bin lift must be taken out of service immediately.

### General

- The bin lift may never be operated when the refuse collection vehicle is travelling along and also not with reverse gear engaged.
- The bin lift may only be operated by persons who are familiar with the operation of the bin lift.
- First read the operating instructions before you start using the bin lift.
- Read through the operating instructions for the compaction body carefully.
- In your daily work as bin lift operative you are working in traffic, do not put it or yourself in danger.
- Before you start your round agree with your colleagues how to proceed in certain situations such as stopping, driving off, etc.
- When you are working with the bin lift, you should not wear any loose clothing and jewellery.
- When working always wear work clothing, safety footwear and work gloves that comply with the standards indicated in the table below.

Personal protection equipment:	According to standard:
Work clothing	NEN-EN-ISO 20471:2013
Safety footwear	NEN-EN-ISO 20345:2011
Work gloves	NEN-EN 420:2003+A1:2009

- Make sure that an unattended bin lift can never be put into operation by unauthorised persons (remove the ignition key).
- Do not start using the bin lift in areas or by installations where due to the presence of gases and/or flammable substances there is a fire and/or explosion hazard.
- The bin lift may not be used under any circumstances where there is an oil supply of more than 60 litres/minute.

- Technical faults must be reported immediately to the person responsible for supervising the bin lift. The bin lift must be taken out of service until the fault has been rectified (if this may be dangerous).
- Never use the lifting chair or other parts of the bin lift system as a seat, **this is extremely dangerous!**
- Under no circumstances may the controls be changed.
- Under no circumstances may any of the safety provisions fitted be removed or changed.
- Don't blind off or cover the ultrasonic sensors, fitted in the safety arms, under any circumstances.
- If the safety provisions are damaged they must be repaired or replaced immediately by original parts.
- Under no circumstances may the cycle speeds and lifting forces set by the manufacturer be changed.
- Operating and safety decals must be present and properly legible.
- Actions that override the safety provisions are expressly forbidden!
- Reversing is only permitted when the lifting chairs are at a safe height.
- It is prohibited to stand on the footboards while the refuse collection vehicle is reversing.
- Make sure that you are visible to the driver of the refuse collection vehicle while it is reversing.
- Check the lights in the controls daily, faulty lights must be replaced as soon as possible.
- The bin lift may never be used as a hoisting instrument.
- Vehicles must not be towed by attaching the towing cable to the bin lift.
- The refuse collection vehicle may never be lifted by the lifting points of the bin lift.
- The lifting chairs must be at transport height while driving.
- When riding on the vehicle you must absolutely not sit or stand on parts of the machine other than the special footboards for this purpose, **this really is extremely dangerous!**
- It is not wise to work with the bin lift in extremely bad weather conditions (storm, thunderstorm, etc.).

## 2.2 Safety instructions during use, maintenance and repair

### During use of the bin lift system

- When the bin lift system is in operation, you should not under any circumstances reach into the lifting system (**danger of injury!**).
- In case of danger immediately press the closest emergency stop switch (see section Safety equipment).
- Check that there are no foreign objects in or between the bin lift system that hinder the operation.
- It is not permitted to load loose dirt above the hopper edge.
- Compaction may not be carried out when objects are protruding out of the opening.
- Do not use the bin lift system in conditions where there is a restricted view of the bin lift.
- Do not use the bin lift system on a very uneven surface.
- The bin lift must not be driven against a bin or a heap of refuse.
- Take into account the heating of the hydraulic oil, the oil may be 40° Celsius hotter than the ambient temperature. As a result the piping and hoses may cause burns at high ambient temperatures.
- Don't go between the safety arms if the automatic function is activated.
- Always switch the automatic function off if for any reason you need to enter between the safety arms.
- Make sure that there are no persons in the immediate vicinity of the bin lift during the loading cycle.
- Working with bin types other than those indicated in the manual is not permitted.
- Nothing may protrude out of the bin, only bins whose top is completely closed may be emptied.
- Do not empty any damaged bins, these may cause problems.
- Excessively heavy bins must be removed from the bin lift:  
max. lifting capacity 2-wheel bin: 1500N (150kg)  
max. lifting capacity 4-wheel bin: 7500N (750kg)
- Let go of the bin as soon as it is lifted by the bin lift.
- Check that the bin is sitting correctly on the pick-up comb before you empty it.
- Because the bin security switch is deactivated during manual operation, you must keep a sharp eye out that the bin is hanging properly on the pick-up comb.

- It is expressly prohibited to help the bin lift system 'manually' with lifting.
- Only give an extra shake if this is needed.
- Only remove the bin when the bin lift has come to a standstill and the bin is standing on the ground again.
- Place empty bins where they do not cause danger to other road users.
- It is prohibited to empty bins holding dangerous and/or radioactive substances.
- It is prohibited to empty bins holding smouldering or burning substances.
- Never walk backwards towards the bin lift system.
- One person offering and/or taking several bins at the same time must be kept to a minimum.
- Check that the bin is sitting properly on the DIN / BAMMENS pick-up arms, before you empty it.
- A bin may only be offered when it is held by the handle bars.

### During maintenance and repair

- It is only permitted for authorised technical personnel to perform maintenance and carry out repairs.
- Faults identified must be rectified before the bin lift is taken into service.
- Switch off the bin lift during maintenance and repairs (turn off the motor of the refuse collection vehicle and switch off the main power switch).
- Inadvertent switching on must be made impossible while working, remove the ignition key.
- You should not get under the lifting chairs during repair or cleaning, unless these are supported.
- Before starting cleaning, you must switch off the drive of the refuse collection vehicle.
- Grease may flow out between the pivot points if a high pressure hose is used, think about your eyes, always use safety goggles.
- Use the lifting points present for raising the bin lift.
- When working on the hydraulic system you must take into account that this is filled with pressurised hydraulic oil. Always use personal protection equipment to avoid contact with the skin and eyes. Use absorbents to avoid environmental pollution.
- You must comply with the maintenance interval specified by the manufacturer.

## 2.2 Safety instructions (continued)

- Electrical fuses should never be bridged or replaced by a fuse with a higher power rating.
- Upon dismantlement, disconnect the plugs and connections from the vehicle.
- After a collision with the bin lift, Terberg must assess whether the bin lift is still safe to use and whether this must first be repaired.
- During maintenance and repairs original or specified parts must always be used.

## 2.3 Warning signs

### Warning signs

All safety and instruction stickers affixed must be replaced if damaged.

The pictogram stickers have the following meaning:



Do not stand under the lifting chair!



Do not stand behind a working bin lift!



Do not reach into the bin lift, danger of injury!



## 2.4 Safety equipment: Emergency stop button

### General

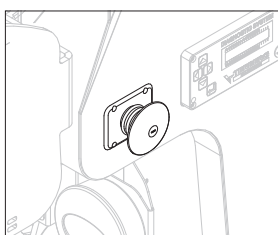
- If during collection the bin lift system does not work or works insufficiently, the workshop or service station should be notified immediately, with as clear as possible a description of the complaint.



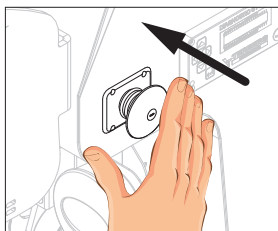
*Repairs may only be carried out by qualified personnel, never rectify faults yourself, this may cause danger for you and damage to the bin lift system!*

- Warning stickers and operating stickers that are no longer clearly legible must be replaced.

### Emergency stop button



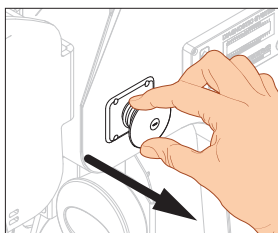
**In case of need**, you can stop the lifting cycle and the compaction equipment immediately with the emergency stop buttons fitted to both sides of the bin lift.



After pressing the emergency stop button, the hydraulic oil supply stops and the electrical circuit is interrupted.

- The control lights go out. The driver of the refuse collection vehicle is warned by a buzzer sound in the cab that the emergency stop button has been pressed.

### Resetting emergency stop button



Reset the emergency stop button by pulling it out. The buzzer in the cab stops.



Press the dark blue descent button (A14 and B14).

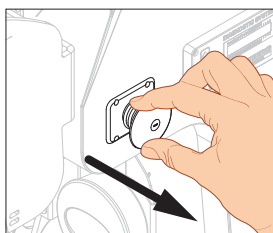
*The lifting chair descends to the bottom position.*

- Eliminate the need for the intervention.
- Remove the bin from the lifting chair.
- **The bin lift system is ready for use again.**

### Entrapment

A dangerous situation occurs if someone is entrapped and the hydraulic system is still pressurised. When the bin lift is deactivated after pressing the emergency stop button, it is not possible to lower the lifting chairs **without resetting the emergency stop button**.

### In such cases proceed as follows:



Reset the emergency stop button by pulling it out. The buzzer in the cab stops.



Press the dark blue descent button (A14 and B14).

*The lifting chair descends to the bottom position.*

## 2.5 Safety equipment: Underwalk protection

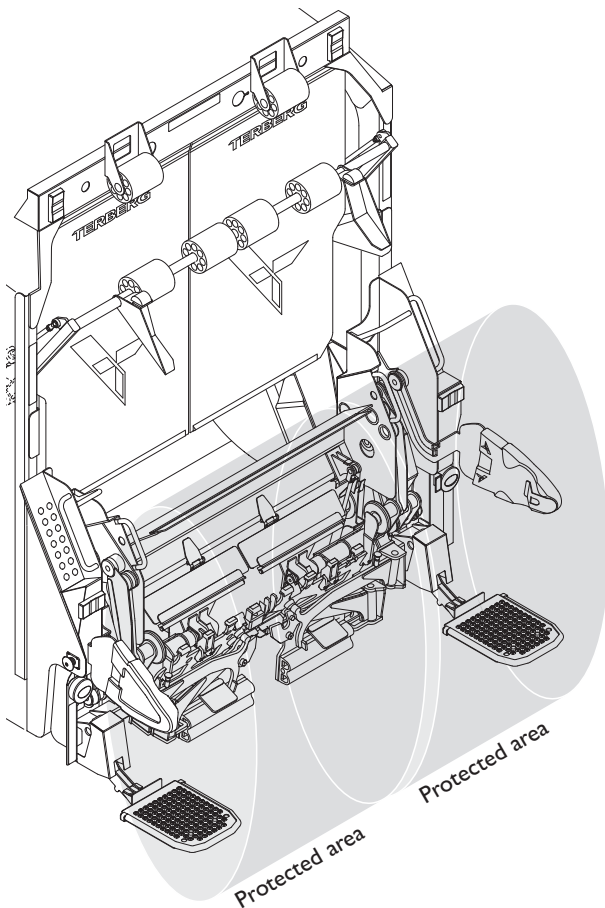
### Underwalk protection (Rear Protective Device)

To comply with European Standard EN 1501-5, all automatic and semi-automatic bin lift systems are equipped with RPD.

This safety equipment protects persons approaching the bin lift when it is emptying automatically (or semi-automatically).

This safety equipment consists of two ultrasonic sensors, fitted to the two safety arms. The sensors detect persons or objects coming within the protected area of the bin lift. **This occurs separately for each lifting chair.**

*The underwalk protection (RPD) is therefore only active when lifting automatically (or semi-automatically) and the safety arms are folded down.*



- As soon as the area under a lifted bin is entered, during automatic or semi-automatic lifting, the downward movement is stopped.
  - A warning light mounted on top of each safety arm comes on and indicates that the RPD has been activated on this side of the bin lift.
  - Automatic (or semi-automatic) lifting does however remain active, the green light flashes.
- Lower the chair manually using the manual push-buttons, the warning light goes out and the RPD is reset.
  - The bin lift is again ready to lift bins automatically (or semi-automatically), the green light shows a steady light again.

The sensors are checked during each automatic lifting operation. When a sensor fault is identified the automatic lifting is switched off.

- The RPD system is designed such that it is not activated by rain or snow. When refuse, snow or another object block the 'unobstructed view' of a sensor, the lifting chair will rise and then stop.
  - The warning light on top of the arm will flash. This flashing indicates that the "unobstructed view" of the sensor is blocked, or that there is a fault in the RPD system.
  - The bin lift still works manually, even with a fault in the RPD.

Because the RPD sensors monitor both sides of the bin lift separately, in case of a defect on one side the other will still lift automatically.

### Semi-automatic function 4-wheel bins (option)

When the bin lift is equipped with the semi-automatic function 4-wheel bins, the activation of the RPD on one of the two sides will result in the bin lift stopping in the tipping position.



In case of damage to the safety equipment, this must be repaired or replaced by original parts immediately.



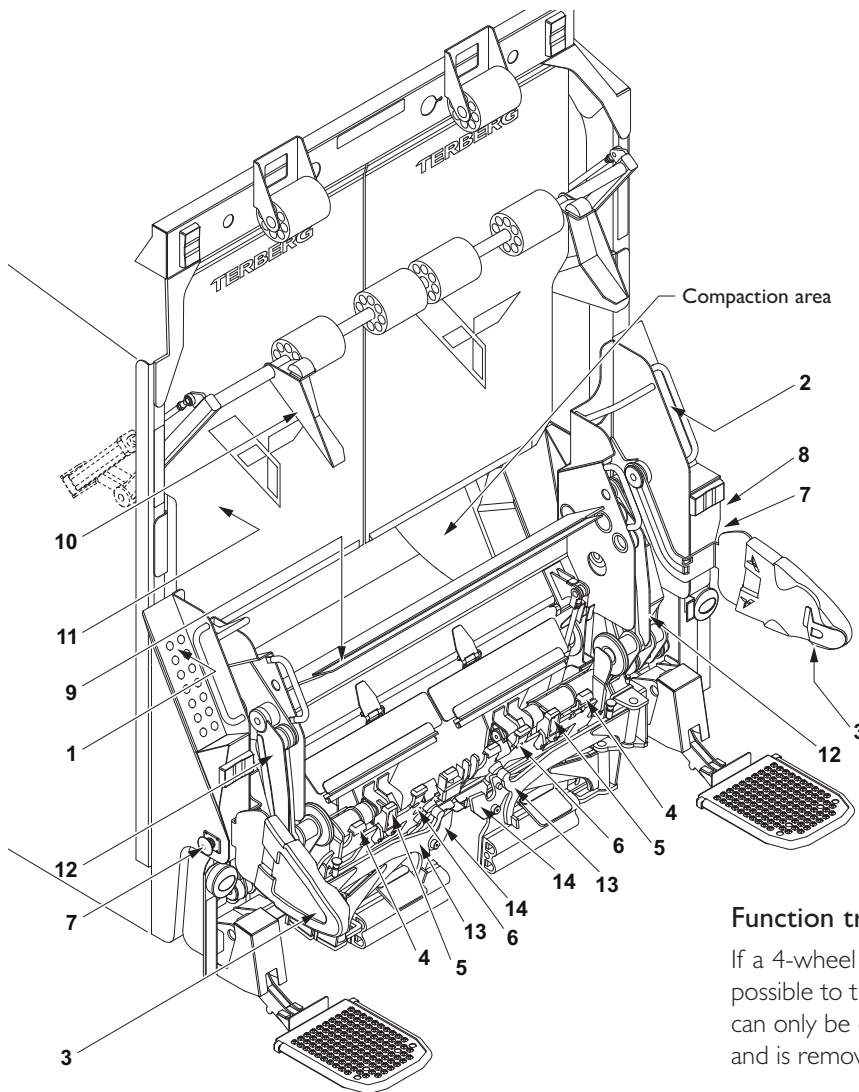
Repairs to the RPD may only be carried out by qualified personnel.



Keep a minimum distance of 2.5 meter between the bin lift and objects which are located behind the bin lift system. This is to avoid dangerous situations in case that a bin falls from the pick-up comb.

THIS PAGE INTENTIONALLY LEFT BLANK

### 3.1 Important components



- 1 = Control panel A (left)
- 2 = Control panel B (right)
- 3 = Safety arm with sensor
- 4 = Pick-up comb
- 5 = Bin security switch
- 6 = Start sensor
- 7 = Emergency stop button
- 8 = Diagnostic box
- 9 = Hopper plate
- 10 = Bin stop / catcher bar (2 positions)
- 11 = Dust curtain
- 12 = Warning edge
- Optional**
- 13 = Bammens / Geesink or Bammens / Kronenburg pick-up arms
- 14 = DIN pick-up arms

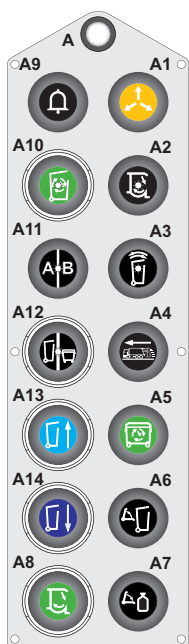
#### Automatic compaction cycle

Use the optional automatic compaction cycle function (button A2 or B2) with care, this avoids unnecessary wear and tear of the compaction mechanism and also saves energy.

#### Function transfer between control panels

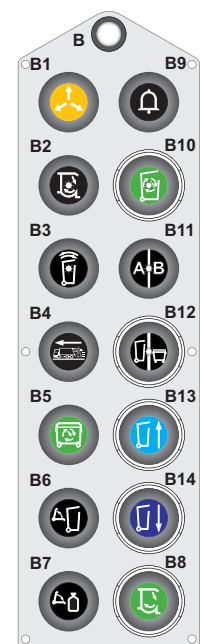
If a 4-wheel bin is moved via a control panel, it is not possible to transfer the control to the other side. This can only be done when the bin is back on the ground and is removed.

#### 1. Control panel LEFT



- A Indicator light: Operation left active
- A1 \* Pushbutton: Release function compactor
- A2 (*option*) Selector button/indicator: Automatic compaction cycle - 0x / 1x / 2x / 3x
- A3 Selector button/indicator: Shake selection 2-wheel bins - 0x / 1x / 2x
- A4 (*option*) Pushbutton: Travel height
- A5 (*option*) Pushbutton: Semi-automatic 4-wheel bins
- A6 (*option*) Pushbutton: Hopper plate UP
- A7 (*option*) Pushbutton: Hopper plate DOWN
- A8 \* Pushbutton: Compaction body manual actuation / compaction 1x
- A9 Pushbutton: Acoustic signal cab
- A10 Pushbutton/indicator: Automatic 2-wheel bins in operation
- A11 (*option*) Pushbutton/indicator: Catcher bar to FORWARD, then light comes on
- A12 (*option*) Pushbutton/indicator: For 4-wheel bins the light must come on
- A13 Pushbutton: Raise lifting chair left or raise 4-wheel bins
- A14 Pushbutton: Lower lifting chair left or lower 4-wheel bins

#### 2. Control panel RIGHT



- B Indicator light: Operation right active
- B1 \* Pushbutton: Release function compactor
- B2 (*option*) Selector button/indicator: Automatic compaction cycle - 0x / 1x / 2x / 3x
- B3 Selector button/indicator: Shake selection 2-wheel bins - 0x / 1x / 2x
- B4 (*option*) Pushbutton: Travel height
- B5 (*option*) Pushbutton: Semi-automatic 4-wheel bins
- B6 Pushbutton: Hopper plate UP
- B7 Pushbutton: Hopper plate DOWN
- B8 \* Pushbutton: Compaction body manual actuation / compaction 1x
- B9 Pushbutton: Acoustic signal cab
- B10 Pushbutton/indicator: Automatic 2-wheel bins in operation
- B11 Pushbutton/indicator: Catcher bar to FORWARD, then light comes on
- B12 Pushbutton/indicator: For 4-wheel bins the light must come on
- B13 Pushbutton: Raise lifting chair right or raise 4-wheel bins
- B14 Pushbutton: Lower lifting chair right or lower 4-wheel bins

\* Refer to the user manual of the compactor body too.

## 3.2 Warnings and tips



Before starting to use the bin lift system, first read the operating instructions.

- It is expressly prohibited to help the bin lift system 'manually' with lifting.
- Excessively heavy bins must be removed from the bin lift.
- Lifting capacity 2-wheel bins max. 150 kg.
- Lifting capacity 4-wheel bins max. 750 kg.
- Operations that deactivate the safety system are expressly prohibited!
- Do not remove the bin before the bin lift has come to a standstill.
- **Always** approach the bin lift forwards with extended arms, even when removing the bins.
- When the automatic function is switched on, you may not under any circumstances enter the work area of the bin lift system.
- When you are working you are in traffic; do not put it and yourself in danger. Place empty bins where they do not cause any danger to other road users.
- When you are working with the bin lift system, do not wear loose clothing and jewellery.
- Loading is teamwork, agree with your colleagues before you start collection how to proceed in certain situations such as stopping, driving away, etc.
- Never use the lifting chair as a seat as **this is extremely dangerous**.
- When the bin lift system is in operation, you may not reach into the lifting system, **this may cause a danger of injury**.
- Reversing is only permitted if the lifting chairs are at a safe height.
  - When the reverse gear of the refuse collection vehicle is engaged the lifting chairs will automatically move to a safe height.
  - Should this not happen for any reason, a warning signal will sound in the cab. This signal will only go off when reverse is disengaged / interrupted or when the bin lift is at a safe travelling height.
- It is prohibited to stand on the footboards while the refuse collection vehicle is reversing.
- Make sure that you are visible to the driver of the refuse collection vehicle while it is reversing.

## 3.3 Daily checks

Before you start work, you must check the bin lift system for the following points:

- Check that no oil loss has occurred.
- Check the lights in the controls, faulty lights must be replaced as soon as possible.
- Look to see that no foreign objects (branches, plastic bags, etc.) are in the bin lift system, this may hinder its operation.
- Check the operation of the bin lift with empty bins by carrying out all possible operations:

- bin lift**
- Emergency stop switches
  - Underwalk protection
  - Bin stop / catcher bar adjustment
  - Hopper plate adjustment
  - Shake function
  - Manual operation
  - Automatic (2 and 4-wheel bins)
  - 4-wheel bin detection sensor (option)
  - Acoustic signal to cab
  - Operation footboards (option)

**\* Compactor**

- Release function compactor
- Compaction cycle manual
- Compaction cycle automatic (option)

\* Refer to the user manual of the compactor body too.

### 3.4 Loading bags and/or bulky waste

To make it easier to put in bags and/or bulky waste, you can lower the opening height of the bin lift.

#### 1) Put both lifting chairs in the lowest position:



Press button (A14 and/or B14) to lower the lifting chairs.

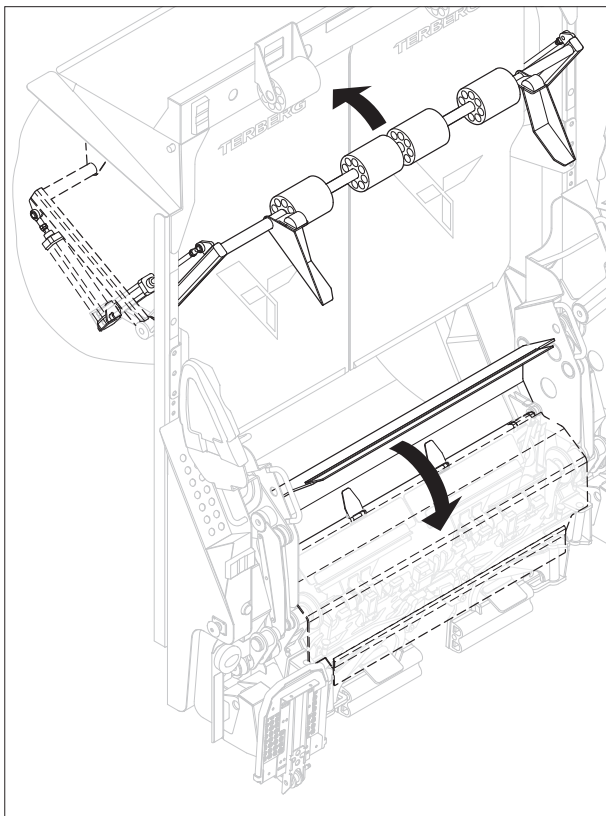
#### 2) Set the hopper plate in the lowest position:



Press button (A7 or B7) to fold the hopper plate forwards.



When the hopper plate is almost in the lowest position, the catcher bar / bin stop goes automatically to the backward (folded away) position. The light in button (A11 or B11) goes OUT.



#### 3) Move catcher bar / bin stop and dust curtains forward again, e.g. in very dusty situations:



Press button (A11 or B11) to move the catcher bar / bin stop forward again. The light in the button comes ON.



Do not forget to raise the hopper plate again before collecting bins.

### 3.5 Manual emptying of 40L bins

As an option 40 litre bins, with a body height of 44 cm, can also be emptied with this bin lift.



There are however also 40 litre versions on the market with a body height of 46 cm, these may come within the range of the start sensor and activate the automatic function and that is undesirable.

The automatic emptying of this 46 cm high 40 litre version, and other bins without wheels, is absolutely not permitted.

Two bins can be emptied simultaneously and independently of one another.

#### 1) Set the hopper plate in the highest position:



If the hopper plate is not yet in the highest position, press button (A6 or B6) to close the hopper plate.

(see also illustration on the next page).

#### 2) Set the bin lift for '2-wheel bins':



Make sure that the light in button (A12 or B12) is OFF.

When the light is on = 4-wheel bins, then press this button 1x.

The bin stop goes automatically to the forward position.

#### 3) Switch off the automatic function:



Make sure that the green light of the automatic button (A10 or B10) is OFF.

When the automatic light is on, then press this button 1x.

When the safety arms are folded up, automatic function is in any case not possible.

#### 4) Hang the bin on the pick-up comb (4).



Because on manual operation the bin security switch is deactivated, great care must be taken that the bin is hanging properly on the pick-up comb.

#### 5) Emptying the bin:



Press the light blue lift button (A13 or B13), the bin is lifted to the tilting position and emptied.

#### 6) Removing the bin:



Press the dark blue descent button (A14 or B14), the bin returns to the starting position.

Remove the bin from the comb.

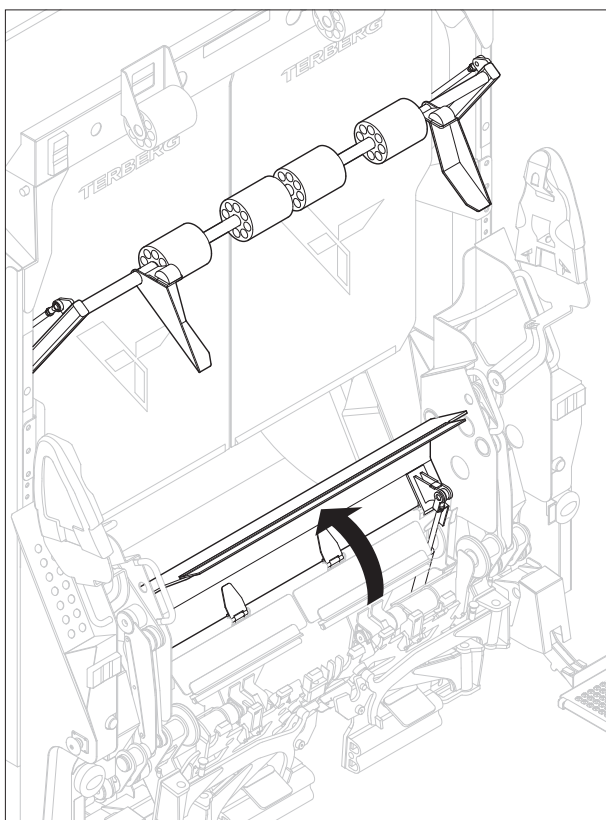
### 3.6 MANUAL emptying of 2-wheel bins with a capacity of 80\* to 360 litres

It is possible to empty 2-wheel bins manually. Two bins with a capacity of 80\* to 360 litres can be emptied simultaneously and independently of one another.

#### 1) Set the hopper plate in the highest position:



If the hopper plate is not yet in the highest position, press button (A6 or B6) to close the hopper plate.



#### 2) Set the bin lift to 2-wheel bins:



Make sure that for 2-wheel bins the light in button (A12 or B12) is OFF.

When the light is on = 4-wheel bins, then press this button 1x.

The bin stop goes automatically to the forward position.

#### 3) Switch off the automatic function:

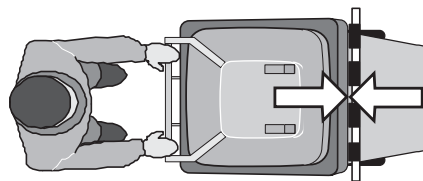


Make sure that the green light of the automatic button (A10 or B10) is OFF.

When the automatic light is on, then press this button 1x.

When the safety arms are folded up, automatic function is in any case not possible.

#### 4) Roll the bin against the pick-up comb (4).



Because on manual operation the bin security switch is deactivated, great care must be taken that the bin is hanging properly on the pick-up comb.

#### 5) Emptying the bin:



Press the light blue lift button (A13 or B13), the bin is lifted to the tilting position and emptied.

#### Shake function (compostable waste)

If refuse is stuck in the bin, you can use the shake function.

- When the bin lift, with a bin on the comb, is moved manually to the top position and the light blue lift button (A13 or B13) is held down or pressed again and held, the bin lift will automatically shake the bin a maximum of 5x.



Only give an extra shake if there is a need for this. Shaking takes time and causes extra noise for the surrounding area.

#### 6) Removing the bin:



Press the dark blue descent button (A14 or B14), the bin is lowered back to the ground.

Remove the bin from the bin lift as soon as the wheels touch the ground.

#### Set compaction cycle 2-wheel bins (option)

For explanation, see page 17.

\* Only 80 litre containers with a minimum rim height of 86 cm (according to EN 840-1) can be emptied with this bin lift.

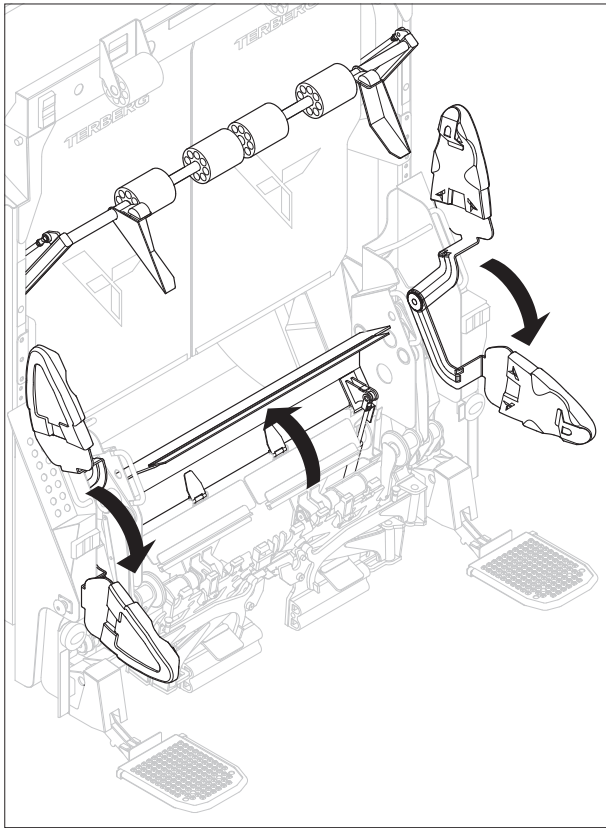
### 3.7 AUTOMATIC emptying of 2-wheel bins with a capacity of 80\* to 360 litres

Two bins with a capacity of 80\* to 360 litres can be emptied simultaneously and independently of one another.

#### 1) Lower the two safety arms:

Sensors are fitted in both safety arms, these detect persons or objects coming within the protected area (between the safety arms).

This occurs separately for each lifting chair and only for automatic lifting (see also para. 2.2).



#### 2) Set the hopper plate in the highest position:



If the hopper plate is not yet in the highest position, press button (A6 or B6) to close the hopper plate.

#### 3) Set the bin lift to 2-wheel bins:



Make sure that for 2-wheel bins the light in button (A12 or B12) is **OFF**.

When the light is on = 4-wheel bins, then press this button 1x.

The bin stop goes automatically to the forward position.

#### 4) Switch on the automatic function:



Make sure that the green light of the automatic button (A10 or B10) is **ON**.

When the automatic light is not on, press this button 1x.

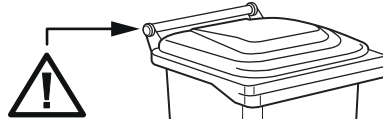


The automatic function must be switched on for each side.

#### 5) Roll the bin against the pick-up comb (4).

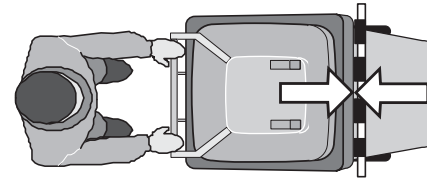


Damaged bins should not be emptied.



Prevent clothes to get caught behind the handle.

Roll the bin up against the bin lift with stretched arms!



#### 6) Release the bin as soon as it rises, the bin rises to the tilting position, is emptied and returns to the starting position.



When the bin is not hanging correctly on the pick-up comb and as a result the bin security switch is not pressed, the upward movement is interrupted and the bin descends to the bottom position. When the lifting movement is interrupted, in spite of the fact that the bin is hanging correctly on the pick-up comb, you must check the bin for damage.

#### 7) Remove the bin from the bin lift as soon as the wheels touch the ground.



In certain circumstances it may happen that a bin that has just been emptied is automatically picked up again.

Press the descent button if this is not wanted!



After emptying a 240 litre bin the pick-up comb will be in too high a position with respect to an 80 / 120 litre bin. By moving the 80 / 120 litre bin briefly before the start sensor the lifting chair will automatically descend to the right height.

**As soon as the automatic mode of the bin lift is activated, it is not permitted for persons to approach the bin lift system between the safety arms!**

\* Only 80 litre containers with a minimum rim height of 86 cm (according to EN 840-1) can be emptied with this bin lift.



### 3.7 AUTOMATIC emptying of 2-wheel bins (continued)

#### Interrupt automatic loading cycle

You can interrupt the automatic loading cycle by pressing the lift button or descent button.



Press the light blue lift button (A13 or B13) or the dark blue descent button (A14 or B14), the green light in the automatic button (A10 or B10) will **FLASH** to show that the automatic loading cycle has been interrupted.

When the lifting chair is again in the bottom position, the green light will remain continuously ON and the automatic emptying of bins is possible again.

#### Set compaction cycle 2-wheel bins (option)

Compaction cycle means the cycle that the compactor of the compaction body completes to move and compress the refuse in the refuse body.



- Press button (A2 or B2) 1x, the compaction cycle begins after emptying one bin. Light in the button flashes 1x.
- Press 2x, the compaction cycle begins after emptying two bins. The light in the button flashes 2x with intervals.
- Press 3x, the compaction cycle begins after emptying three bins. The light in the button flashes 3x with intervals.



*If the compaction compartment is too full this may cause damage to the compaction system and the bin lift.*

#### Shake function (compostable waste)

If refuse is stuck in the bin, you can use the shake function. Switch this function on before switching on the semi-automatic function.



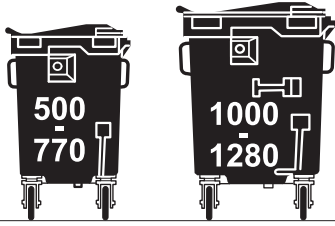
- **Shake once:** press the shake button 1x, the yellow light flashes 1x each time with intervals.
- **Shake twice:** press the shake button 2x, the yellow light flashes 2x each time in short succession with intervals.



*Only give an extra shake if there is a need for this. Shaking takes time and causes extra noise for the surrounding area.*

### 3.8 Manual emptying of 4-wheel bins with a capacity of 500 to 1280 litres

4-wheel flat-topped bins;  
capacity 500 to 1280 litres



As an option the bin lift can be equipped with:

- **Automatic 4-wheel bin detection sensor** (see bottom of next page)
- **One-man operation of 4-wheel bins** (see para. 3.13)
- **Semi-automatic function for 4-wheel bins** (see para. 3.14)

#### 1) Set the hopper plate in the highest position:



If the hopper plate is not yet in the highest position, press button (A6 or B6) to close the hopper plate.

#### 2) Set the bin lift to 4-wheel bins:



Make sure that for 4-wheel bins the light in button (A12 or B12) is ON. When the light is not on = 2-wheel bins, press this button 1x. As soon as this button is set to 4-wheel bins, both lifting chairs will be set automatically to synchronised level.

#### 3) Set the bin stop in the right position:



- For flat-topped bins of **500 and 770 litres** the bin stop must always be in the forward (work) position. The light in button (A11 or B11) must be ON.
- For flat-topped bins of **1000 to 1280 litres** the bin stop must always be in the backward (folded away) position. The light in button (A11 or B11) must be OFF.

#### 4) Lower both lifting chairs:



Press the dark blue descent button (A14 or B14) and lower both lifting chairs to the right bin height.

#### 5) Roll the bin over the pick-up combs (4).



Make sure that the bin is hanging properly on the pick-up comb.



When a 4-wheel bin is moved via a control panel, it is not possible to transfer the control to the other side. This can only be done when the bin is standing on the ground again and is removed.

#### 6) Emptying the bin:



Press the light blue lift button (A13 or B13), the bin is lifted to the tilting position and emptied. The compactor will carry out a compaction cycle after emptying each bin.

#### Shake function (compostable waste)

If refuse is stuck in the bin, you can use the shake function.

- When the bin lift, with a bin on the comb, is moved manually to the top position and the light blue lift button (A13 or B13) is held down or pressed again and held, the bin lift will shake the bin automatically a maximum of 5x.



Only give an extra shake if there is a need for this. Shaking takes time and causes extra noise for the surrounding area.

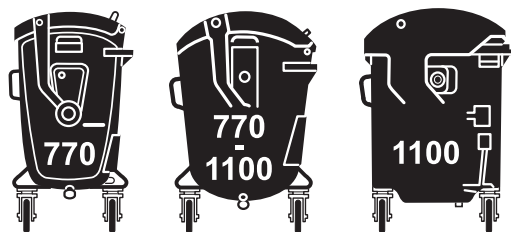
#### 7) Removing the bin:



Press the dark blue descent button (A14 or B14), the bin is lowered back to the ground. Remove the bin from the bin lift as soon as the wheels touch the ground.

### 3.9 Manual emptying of 4-wheel bins with a capacity of 770 and 1100 litres

4-wheel roll-topped bins;  
capacity 770-1100 litres



As an option the bin lift can be equipped with:

- Automatic 4-wheel bin detection sensor (see bottom of this page)
- One-man operation of 4-wheel bins (see para. 3.13)
- Semi-automatic function for 4-wheel bins (see para. 3.14)

#### 1) Set the hopper plate in the highest position:



If the hopper plate is not yet in the highest position, press button (A6 or B6) to close the hopper plate.

#### 2) Set the bin lift to 4-wheel bins:



Make sure that for 4-wheel bins the light in button (A12 or B12) is ON.

If the light is not on = 2-wheel bins, press this button 1x.

As soon as this button is set to 4-wheel bins, both lifting chairs will automatically be set to synchronised level.

#### 3) Set the catcher bar in the forward position:



If the catcher bar is not yet in the forward (work) position, press button (A11 or B11). The light in the button must be ON.

#### 4) Lower both lifting chairs:



Press the dark blue descent button (A14 or B14) and lower both lifting chairs to the right bin height.

#### 5) Roll the bin over the pick-up combs (4).



Make sure that the bin is hanging properly on the pick-up comb.



When a 4-wheel bin is moved via a control panel, it is not possible to transfer the control to the other side. This can only be done when the bin is standing on the ground again and is removed.

#### 6) Emptying the bin:



Press the light blue lift button (A13 or B13), the bin is lifted to the tilting position and emptied.

The compactor will carry out a compaction cycle after emptying each bin.

#### Shake function (compostable waste)

If refuse is stuck in the bin, you can use the shake function.

- When the bin lift, with a bin on the comb, is moved manually to the top position and the light blue lift button (A13 or B13) is held down or pressed again and held, the bin lift will shake the bin automatically a maximum of 5x.



Only give an extra shake if there is a need for this. Shaking takes time and causes extra noise for the surrounding area.

#### 7) Removing the bin:



Press the dark blue descent button (A14 or B14), the bin is lowered back to the ground.

Remove the bin from the bin lift as soon as the wheels touch the ground.

#### Automatic transfer between 2-wheel and 4-wheel bins (option)

As an option the bin lift can be equipped with automatic 4-wheel bin detection sensor.

- When a 4-wheel bin is then driven against the lifting chairs, the bin lift is automatically switched from 2-wheel to 4-wheel bins and vice versa.
- The bin lift must however be switched the first time manually from 4-wheel to 2-wheel and also once from 2-wheel to 4-wheel.

### 3.10 Loading with Bammens pick-up arms (option)

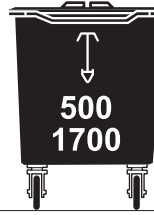
The OmniMAX can (as an option) be equipped with one or two pairs of pick-up arms:

- The outside position can be equipped with pick-up arms fitted with 'Bammens / Kronenburg' or 'Bammens / Geesink' pick-up heads.
- The inside position can be equipped with pick-up arms fitted with DIN pick-up heads.

Loading with Bammens pick-up arms (option):

4-wheel Bammens bins;

capacity 500-1700 litres



#### 1) Set the hopper plate in the highest position:



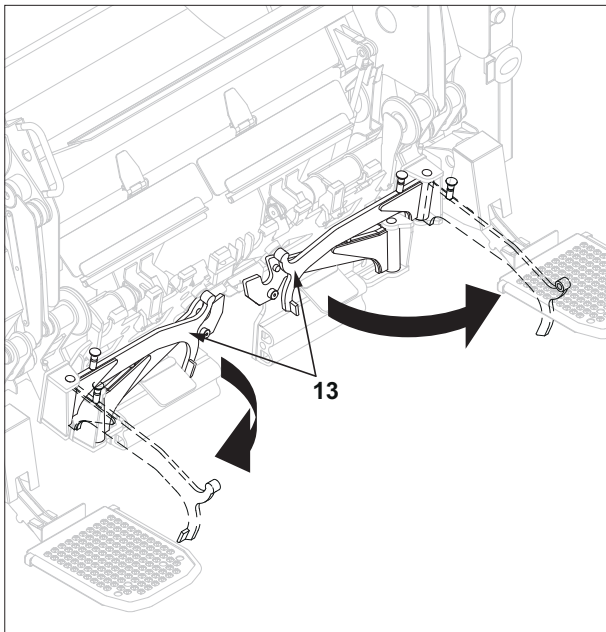
If the hopper plate is not yet in the highest position, press button (A6 or B6) to close the hopper plate.

#### 2) Set the bin lift to 4-wheel bins:



Make sure that for 4-wheel bins the light in button (A12 or B12) is ON. If the light is not on = 2-wheel bins, press this button 1x.

#### 3) Fold out the Bammens pick-up arms (13):



The bin stop / catcher bar will automatically go to the backward (folded away) position. This can also not be changed manually. The light in button (A11 or B11) goes OFF.

#### 4) Bring the pick-up heads to height:



Press the light blue lift button (A13 or B13) or the dark blue descent button (A14 or B14) until the pick-up heads are at the same height as the pick-up cams of the bin.



#### 5) Roll the bin straight between the pick-up arms.



When a 4-wheel bin is moved via a control panel, it is not possible to transfer the control to the other side. This can only be done when the bin is standing on the ground again and is removed.

#### 6) Emptying the bin:



Press the light blue lift button (A13 or B13), the bin is lifted to the tilting position and emptied.

The compactor will carry out a compaction cycle after emptying each bin.

#### 7) Removing the bin:



Press the dark blue descent button (A14 or B14), the bin is lowered back to the ground.

Remove the bin from the bin lift as soon as the wheels touch the ground.



Ensure that your fingers do not become trapped when folding in the pick-up arms.

### 3.1.1 Loading with DIN pick-up arms (option)

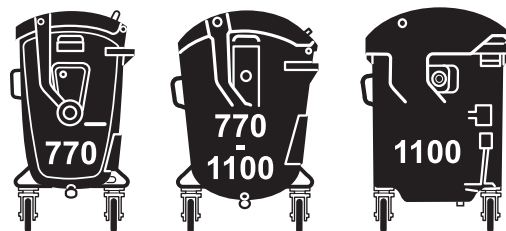
The OmniMAX can (as an option) be equipped with one or two pairs of pick-up arms:

- The outside position can be equipped with pick-up arms fitted with 'Bammens / Kronenburg' or 'Bammens / Geesink' pick-up heads.
- The inside position can be equipped with pick-up arms fitted with DIN pick-up heads.

Loading with DIN pick-up arms (option):

4-wheel roll-topped bins;

capacity 770-1100 litres



#### 1) Set the hopper plate in the highest position:



If the hopper plate is not yet in the highest position, press button (A6 or B6) to close the hopper plate.

#### 2) Set the bin lift to 4-wheel bins:



Make sure that for 4-wheel bins the light in button (A12 or B12) is ON.  
If the light is not on = 2-wheel bins, press this button 1x.

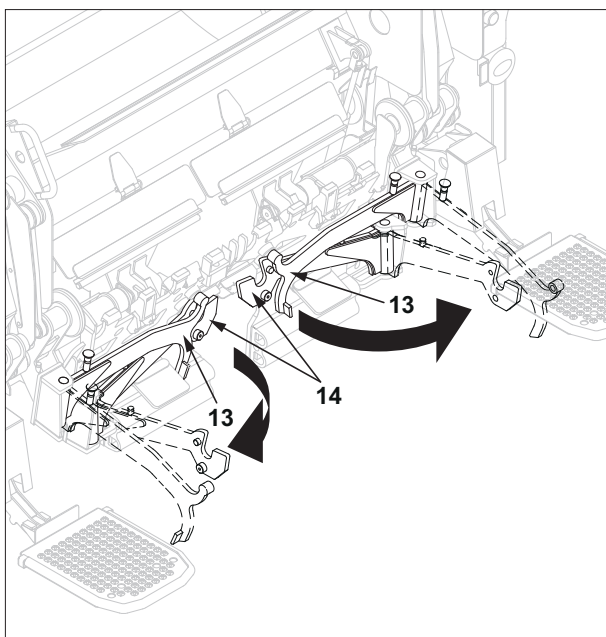
#### 3) Set the catcher bar to the forward position:



If the catcher bar is not yet in the forward (work) position, press button (A11 or B11). The light in the button must be ON.

#### 4) Fold out the DIN pick-up arms (14):

If as an option Bammens pick-up arms (13) are also mounted, these must first be folded out.



#### 5) Bring the pick-up heads to height:



Press the light blue lift button (A13 or B13) or the dark blue descent button (A14 or B14) until the pick-up heads are at the same height as the pick-up cams of the bin.

#### 6) Roll the bin straight between the pick-up arms.



When a 4-wheel bin is moved via a control panel, it is not possible to transfer the control to the other side. This can only be done when the bin is standing on the ground again and is removed.

#### 7) Emptying the bin:



Press the light blue lift button (A13 or B13), the bin is lifted to the tilting position and emptied.

The compactor will carry out a compaction cycle after emptying each bin.

#### 8) Removing the bin:



Press the dark blue descent button (A14 or B14), the bin is lowered back to the ground.

Remove the bin from the bin lift as soon as the wheels touch the ground.



Ensure that your fingers do not become trapped when folding in the pick-up arms.

### 3.12 Loading with DIN pick-up arms (option)

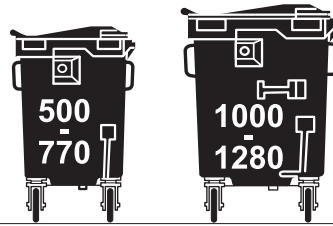
The OmniMAX can (as an option) be equipped with one or two pairs of pick-up arms:

- The outside position can be equipped with pick-up arms fitted with 'Bammens / Kronenburg' or 'Bammens / Geesink' pick-up heads.
- The inside position can be equipped with pick-up arms fitted with DIN pick-up heads.

Loading with DIN pick-up arms (option):

4-wheel flat-topped bins;

capacity 500 to 1280 litres



#### 1) Set the hopper plate in the highest position:



If the hopper plate is not yet in the highest position, press button (A6 or B6) to close the hopper plate.

#### 2) Set the bin lift to 4-wheel bins:



Make sure that for 4-wheel bins the light in button (A12 or B12) is ON.

If the light is not on = 2-wheel bins, press this button 1x.

#### 3) Set the bin stop in the right position:

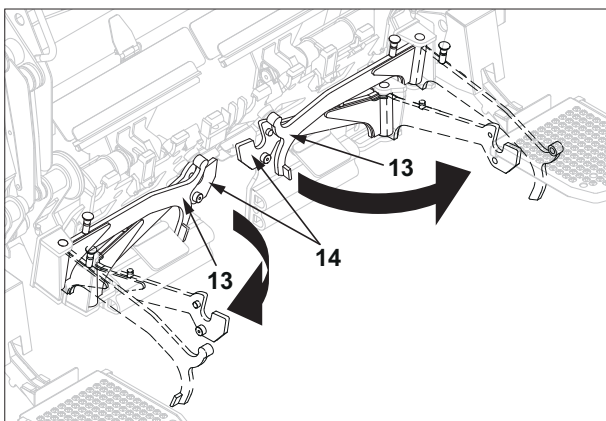


- For flat-topped bins of **500 and 770 litres** the bin stop must always be in the forward (work) position. The light in button (A11 or B11) must be ON.

- For flat-topped bins of **1000 to 1280 litres** the bin stop must always be in the backward (folded away) position. The light in button (A11 or B11) must be OFF.

#### 4) Fold out the DIN pick-up arms (14):

If as an option Bammens pick-up arms (13) are also mounted, these must first be folded out.



#### 5) Bring the pick-up heads to height:



Press the light blue lift button (A13 or B13) or the dark blue descent button (A14 or B14) until the pick-up heads are at the same height as the pick-up cams of the bin.



#### 6) Roll the bin straight between the pick-up arms.



When a 4-wheel bin is moved via a control panel, it is not possible to transfer the control to the other side. This can only be done when the bin is standing on the ground again and is removed.

#### 7) Emptying the bin:



Press the light blue lift button (A13 or B13), the bin is lifted to the tilting position and emptied.

The compactor will carry out a compaction cycle after emptying each bin.

#### 8) Removing the bin:



Press the dark blue descent button (A14 or B14), the bin is lowered back to the ground.

Remove the bin from the bin lift as soon as the wheels touch the ground.



Ensure that your fingers do not become trapped when folding in the pick-up arms.

### 3.13 One-man operation / automatic handling 4-wheel bins (option)

As an option the bin lift system can be equipped with one-man operation for 4-wheel bins. This provision makes it possible to empty a 4-wheel bin **via the comb pick-up** with one man. As soon as the bin has been driven over the pick-up combs, it is lifted 20 cm.



One-man operation is only possible when 4-wheel bins are lifted with the pick-up comb.

- Any pick-up arms must all be folded in.
- The two safety arms must folded down.
- Follow steps 1 to 4 as described in para. 3.8 or 3.9:

#### 5) Switch on the automatic function:



Make sure that the green light of the automatic button (A10 or B10) is ON.  
If the automatic light is off, press this button 1x.

#### 6) Roll the bin over the pick-up combs (4):

The bin is lifted approx. 20 cm.



Make sure that the bin is hanging properly on the pick-up comb.

#### 7) Emptying the bin:



Press the light blue lift button (A13 or B13), the bin is lifted further to the tilting position and emptied.

The compactor will carry out a compaction cycle after emptying each bin.



When a 4-wheel bin is moved via a control panel, it is not possible to transfer the control to the other side. This can only be done when the bin is standing on the ground again and is removed.

#### 8) Removing the bin:



Press the dark blue descent button (A14 or B14), the bin is lowered back to the ground.

Remove the bin from the bin lift as soon as the wheels touch the ground.




When after lifting with one-man operation, you lift 2-wheel bins, the one-man operation function is remembered.

As soon as you offer a 4-wheel bin again one-man operation is immediately reactivated!


### 3.14 Emptying 4-wheel bins with the semi-automatic function (option)

As an option the bin lift system can be equipped with a semi-automatic function for 4-wheel bins. *If this option is activated, one-man operation is not present (cannot be at the same time)!*

 The semi-automatic function is only possible when 4-wheel bins are lifted with the pick-up comb.

- Any pick-up arms must all be folded in.
- The two safety arms must be folded down.
- Follow steps 1 to 4 as described in para. 3.8 or 3.9:

#### 5) Switch on the semi-automatic function:


 Press the optional green 4-wheel bin button (A5 or B5).

6) Roll the bin over the pick-up combs (4).  
The bin is lifted approx. 20 cm.



*Make sure that the bin is hanging properly on the pick-up comb.*


#### 7) Press the semi-automatic button again:

 The bin is brought to the tilting position and emptied, the bin is then lowered automatically to the start position. Approx. 20 cm above the ground.



*When a 4-wheel bin is moved via a control panel, it is not possible to transfer the control to the other side. This can only be done when the bin is standing on the ground again and is removed.*

#### 8) Press the semi-automatic button again:

 The bin is lowered back to the ground. Remove the bin from the bin lift as soon as the wheels touch the ground.



### 3.15 Travel height and footboards

#### Footboards and handle bars (option)

The bin lift can as an option be equipped with footboards and handle bars. The handle bars, three brackets on each side, are firmly mounted. There are three situations of use. For each of these situations the footboards and safety arms must be in the right position.

#### 1) Transport

Safety arms and footboards folded up.

#### 2) Loading

Safety arms and footboards folded down.

#### 3) Riding

Safety arms and footboards folded down.

#### If someone is standing on the footboard:

- The bin lift does not work. Pressing on the footboard activates a sensor in the footboard.
- Reversing is not permitted / possible (motor must be turned off or vehicle brakes).
- The refuse collection vehicle drives at only 25 km per hour.
- The compactor may not operate fully automatically.



Never stand on other parts of the bin lift and also never use them as a seat, **this is extremely dangerous!**

#### Travel height

To avoid damage to the bin lift, the **OmniMAX** is fitted with this function as standard. When this function is switched on both lifting chairs go to a pre-set position.



The bin lift may never be operated when the refuse collection vehicle is travelling along and also not when reverse gear is engaged.

#### • Switch on travel height:



Press button (A4 or B4), both lifting chairs go to the travel height position.

